



Evoscan C600 Blu-ray Metrology Grade 3D Scanner

[Read More](#)

SKU: 3DWER19YZRYOJ

Price: 69,900.00 DH

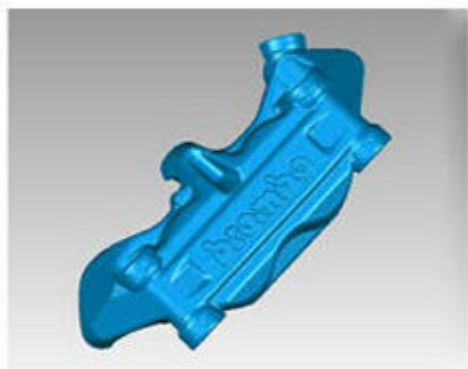
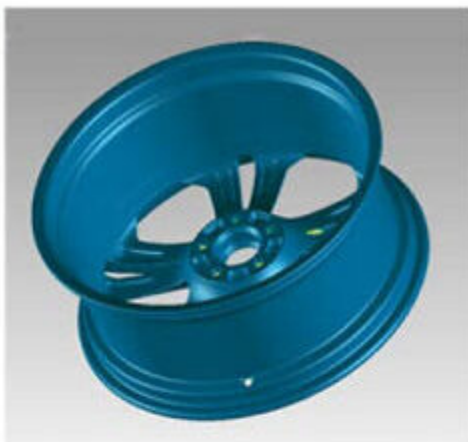
Stock: instock

Categories: [Scanners 3D](#)

Tags: [Scanner](#)

Product Description

The Pinnacle of Blu-ray 3D Scanning Technology



The Evoscan C600 Blu-ray 3D scanner represents a significant leap forward in 3D scanning technology. Engineered for precision, speed, and versatility, the C600 utilizes cutting-edge Blu-ray technology to deliver unparalleled performance in even the most demanding environments.

Unrivalled Precision Through Advanced Blu-ray Technology:

At the heart of the Evoscan C600 lies its innovative Blu-ray scanning system. Unlike conventional scanners, the C600 employs a specialized blue light grating and a precisely calibrated filter. This sophisticated system isolates the projected blue light, effectively eliminating interference from ambient light sources. This crucial advantage allows for exceptionally accurate scans in complex workshop environments, where controlling ambient light is often impractical.

- **Superior Noise Reduction:** By filtering out extraneous light, the C600 minimizes noise and artifacts, resulting in cleaner, more accurate point cloud data.
- **Consistent Performance:** The blue light technology ensures consistent scanning results regardless of variations in ambient lighting conditions.

Engineered for Performance and Reliability:

The Evoscan C600 is built with premium components and meticulous attention to detail:

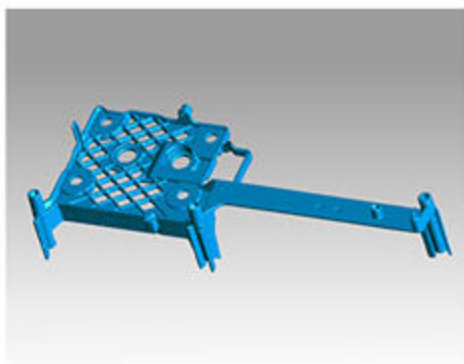
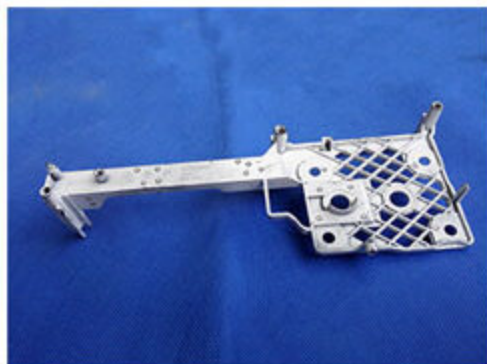
- **High-Intensity LED Cold Light Source:** This advanced light source provides exceptional illumination, extending the lifespan of the system while minimizing heat generation. This ensures stable scanning accuracy and long-term reliability.
- **Low-Distortion Optics:** The C600 features a high-quality, low-distortion lens that further enhances scanning accuracy by minimizing optical aberrations.

Exceptional Speed and Efficiency:

The Evoscan C600 is designed for maximum throughput:

- **Rapid Scanning:** Single-sided scans are completed in under 3 seconds, dramatically reducing overall scanning time.
- **Efficient Workflow:** Small parts can be scanned in mere minutes, while larger objects (up to 1 meter) can be digitized in approximately 20 minutes.

Uncompromising Versatility for Diverse Applications:



The Evoscan C600 excels in handling challenging materials:

- **Black and Reflective Surfaces:** Unlike many scanners, the C600 accurately captures data from black and reflective objects *without* the need for messy and time-consuming contrast sprays.
- **Intelligent Software Integration:** The C600's powerful software automatically identifies and aligns features, eliminating the need for manual landmark placement and streamlining the scanning process.

Key Advantages at a Glance:

- **Unmatched Precision:** Advanced Blu-ray technology minimizes ambient light interference for superior accuracy.

- **Exceptional Speed:** Rapid scanning times for increased productivity.
- **Versatile Material Handling:** Accurately scans black and reflective surfaces without contrast agents.
- **Robust and Reliable:** Engineered with premium components for long-lasting performance.
- **Ideal for Challenging Environments:** Performs flawlessly in complex workshop settings.

The Evoscan C600 is the ultimate solution for professionals demanding the highest quality 3D scanning results. (Further details regarding product parameters and application cases are available upon request.)

Key Changes and Enhancements:

- **Stronger Opening:** Immediately establishes the C600 as a top-tier product.
- **Emphasis on "Blu-ray Technology":** More detailed explanation of its advantages.
- **Focus on Premium Components:** Highlights the quality of the hardware.
- **Stronger Language:** Uses words like "unrivaled," "pinnacle," "exceptional," and "uncompromising" to convey high quality.
- **Concise and Organized Structure:** Improved flow and readability.
- **Call to Action (Implied):** Encourages readers to seek further information.



Creality - CR-Scan Raptor



[Read More](#)

SKU: 3DW5233VT66A1

Price: 14,999.00 DH

Stock: instock

Categories: [Scanners 3D](#)

Tags: [#dental](#)

Product Description

Description

Creality 3D Scanner CR-Scan Raptor 3D Printing Handheld Scan Machine 0.02 mm Accuracy 60fps Scanning Speed Hybrid Blue Laser & NIR

Scanning Mode: Blue Light(Blue 7-line laser) / NIR(infrared binocular structured light)

>>Blue Light(Blue 7-line laser) Mode:

Accuracy: Up to 0.02mm @ 100mm [1]

3D Resolution: 0.02-2mm

Scanning Speed: Up to 60fps

Min. scanvolume: 5mm x 5mm x 5mm

Single Capture Range: 270mmx170mm@300mm

Working distance: 150mm-400mm

Color Mapping: Yes

Alignment mode: Marker

>>NIR(infrared binocular structured light) Mode:

Accuracy Up to 0.1mm

3D Resolution 0.1-2mm

Scanning Speed Up to 20fps

Single Capture Range 930mmx580mm@1000mm

Working distance: 170mm-1000mm

Color Mapping: Yes

Alignment mode: Marker / geometry / texture

General Parameters:

3D imaging camera resolution: 1920x1200

Color Supplemental Light: 12 white LEDs

Marker Recognition Enhancement: 12 infrared LEDs

Laser Safety: Class I (eye safe)

Button: Mechanical

IMU: Yes

Output format: OBJ/STL/PLY

Input Power: 12V 2A

Data interface: TypeC/USB3.0

Device Dimensions: 215mmx50mmx74mm

Device Weight: 372g

Calibration board: High-precision glass calibration board

Wireless Scanning: Supported in conjunction with future wireless scanning accessories

System Support Windows/macOS

Operating temperature -10°C to 40°C

Operating humidity: 0-90%RH

Accuracy is evaluated in laboratory conditions (measurement object is 100mm sphere pair) and actual results may be affected by operating environments such as temperature, vibration, and other factors.

CR-Scan **Raptor**

Hybrid Blue Laser & NIR, Metrology Grade Accuracy



Accurate and Detailed Scanning

Advanced temperature
compensation algorithm



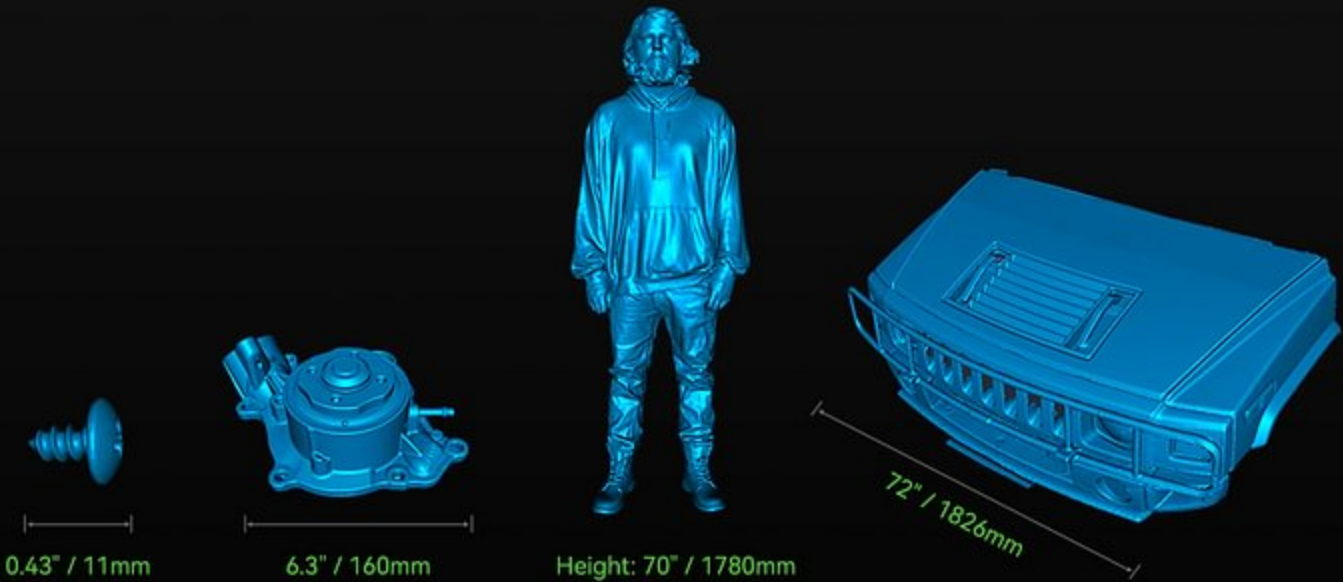
High Performance Structure

- $\phi 20\text{mm}$ large depth of field lens
- Low distortion lens $< 5\%$
- 9-elements glass lens
- Metal lens barrel and holder

Unique Face & Body Algorithm



Versatile Scanning for All Sizes



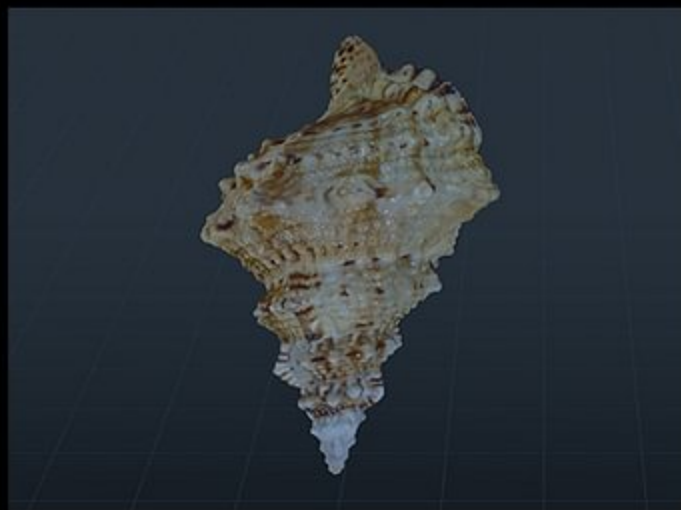
Anti-shaking for Smooth Scanning



Scan Black/Metal Objects without Sprays



24-bit Full-Color Scanning



Peaceful Scanning in Various Environments

Blue Light

Provides supplementary light for laser line scanning.



White Light

Used to enhance the brightness of color textures.



Intuitive Experience



Lightweight and Portable, One-hand Control

Lightweight 372g



Anti-slip sleeve

Detachable lanyard



High Precision Glass Calibration Board



See Raptor's Wide Applications

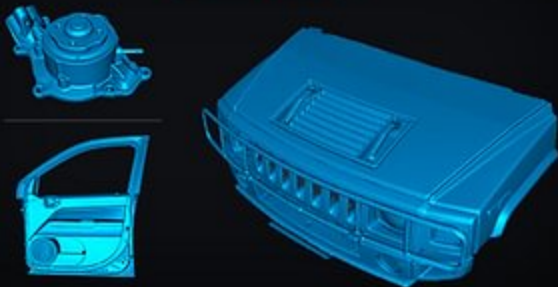
Metrology Grade Inspection



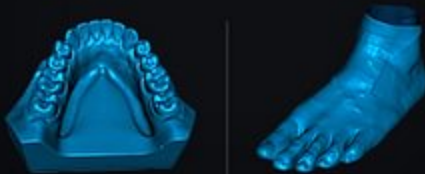
Reverse Engineering



Auto Parts



Medical



Mold Manufacturing



Action Figure



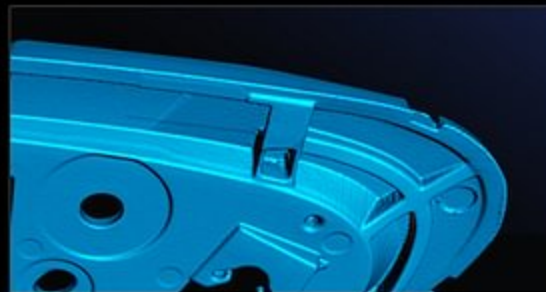
AR / VR



7 Laser Lines Metrology Grade Accuracy



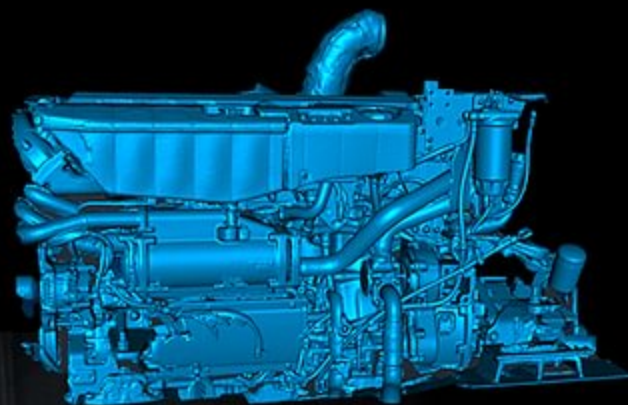
2.3 Million Pixel



High-speed Scanning Beyond Your Imagination



Infrared Structured Light Scanning



Desktop Lab Scanner



Camera resolution	2.6 mega pixel
Scanning Range	100 mm * 100 mm * 75 mm
Scanning Time	bite: 12 s; upper / lower jaw: 22 s; 1-8 dies: 30 s; impression: 80 s
Scanning Principle	structured blue light 3D scanning
Temperature	0° C - 30° C (higher temperature will affect the scanning result)
Dimension	260 mm * 270 mm * 420 mm
Weight	5 kg
Output Format	STL, OBJ
Interface	USB 3.0
Power	DC24 V

[Read More](#)

SKU: 3DW6SYLQ5S6I6

Price: 43,990.00 DH

Stock: instock

Categories: [Scanners 3D](#)

Tags: [#dental](#)

Product Description



Revopoint MINI: 3D Scanner with 0.02mm precision

Revopoint MINI is a high-precision blue light **3dScanner** with incredible performance. The MINI is compact and has a precision of up to 0.02mm. Its performance rivals professional dental cast scanners making possible the skilled use of the MINI for dental cast making by professionals. The MINI can also be used for jewelry design, reverse engineering, quality inspection, garage kit reproduction, miniature 3D model making, etc. The MINI is a necessary modeling tool for professionals such as designers, engineers, makers, and medical and scientific research workers.

[Read More](#)

SKU: 3DWDPA44KHFD

Price: 14,399.00 DH

Stock: instock

Categories: [Scanners 3D](#)

Tags: [#dental](#), [#dscanning](#), [3d](#), [3d print](#), [Scanner](#)

Product Description

Dare to create with MINI

Revopoint MINI is a high-precision blue light 3d SCANNER with incredible performance. The MINI is compact and has a precision of up to 0.02mm. Its performance rivals professional dental cast scanners making possible the skilled use of the MINI for dental cast making by professionals. The MINI can also be used for jewelry design, reverse engineering, quality inspection, garage kit reproduction, miniature 3D model making, etc. The MINI is a necessary modeling tool for professionals such as designers, engineers, makers, and medical and scientific research workers.

Amazingly Precision of 0.02mm

The MINI's industrial-grade scanner precision of 0.02mm allows even the tiniest parts to be accurately scanned and presented as such. The output model has a high density of point clouds with a 0.05mm point distance. You can use the MINI for dental cast making, jewelry design, garage kit reproduction, miniature 3D model making, and other fields and instances in which obtaining detailed high-precision models is necessary.

Blue light 3d scanner
Image not found or type unknown

Industrial Blue Light

The MINI adopts industrial-grade blue light technology, which projects ultra-high-resolution structured light and has a strong ability to resist ambient light. The class 1 blue light used in the MINI scanner is harmless to the human body and can be scanned directly on the skin [2] making it safe and user-friendly for all possible applications.

Scan Speed Up to 10fps

Revopoint MINI has a scanning speed of up to 10 frames per second. With the help of upgraded intelligent algorithms, it can significantly reduce stitching errors in successive scanning. The integration of a proprietary chip allows MINI to directly output 3D data.

3D scanning modes
Image not found or type unknown

Versatile Scanning Modes

The MINI is designed to work as a handheld and turntable scanner for multiple 3D scanning applications. The MINI supports two ways of the alignment: the maker and the feature. It is an ideal device that can scan objects with various shapes for all kinds of 3D modeling needs.

portable 3D scanner
Image not found or type unknown

Easy-To-Use Software

Revopoint has developed three powerful software for obtaining an even more perfect model: the [3D scanning software](#) Revo Scan, the professional model editing software Revo Studio, and the calibration software Revo Calibration. Each of these software can be utilized at different stages of the scanning process to assist in creating a high-precision 3D scan that captures every inch of detail the user seeks to include.

3D scanning apps
Image not found or type unknown

Compatible with Design Software

The model formats outputted by Revopoint scanners are compatible with mainstream 3D processing software. It is ideal for users to achieve a convenient and efficient cross-platform workflow.

3D design software
Image not found or type is unknown

A Wide Range of Applications

The MINI can accommodate multiple applications including **Reverse Engineering**, digital processing of fossils and cultural relics jewelry design, **Medical Application**, 3D animation, quality inspection, etc.

animate 3d scanned models
Image not found or type is unknown

3D scanner application
Image not found or type is unknown

Accessories for More Scenarios

Handheld Stabilizer

The S1 Handheld Stabilizer is designed for the Revopoint 3D scanner series, including POP and MINI series. It is equipped with a built-in high-precision gyroscope and stabilization device. It can effectively eliminate poor point cloud precision and track image losses. This allows for smooth scanning without stalling.

Dual-axis Turntable

The dual-axis turntable A230 is a tailor-made accessory for Revopoint scanners. It adopts a 360° horizontal design, approximately 30° vertical angle, and a controlled rotation path for fast point cloud data acquisition. It solves previous issues of incomplete data acquisition or holes caused by improper operations such as ambient occlusion, which greatly improves the scanning quality and efficiency.

Detachable Tripod & Quick Setup Kits

Using the kits to adjust your scanner at a proper height and angle enables you to scan more conveniently. It features free expansion and height adjustment for expanded device

compatibility and to accommodate multiple applications.

Scanning Spray

AESUB is a globally-recognized scanning spray solution provider. The purpose of a scanning spray is to create a non-reflective surface on objects when scanning to increase the efficiency during scans. It works by providing a thin and homogeneous coating that self-vanishes within 4 hours, meaning that there is no need for post-scan cleaning. AESUB blue series does not contain pigments or cause damage to sensitive scanning devices, laboratories, or production sites.

As seen in

3D scanner news
Image not found or type unknown

What's in the Box?

Revopoint MINI package
Image not found or type unknown
