

CREALITY



## Creality 3D Ender 3 V2 3D Printer

[Read More](#)**SKU:** 3DW4J89FIDBHV**Price:** 3,699 DH**Stock:** outofstock**Categories:** [FDM](#), [3D Printers](#)**Tags:** [3d](#), [3dprinter](#), [fdm](#), [print](#)

### Product Description

Features: Model: Ender-3 V2 Plug: EU Input Power: 110/240 V Material: Metal Forming Technology: FDM Print size: 220 \* 220 \* 250mm Layer thickness: 0.1-0.4mm Filament: PLA / TPU / PETG Supported OS: for MAC / WindowsXP / 7/8/10 Cutting software: Simplify3d / Cura Printing precision :  $\pm 0.1$ mm Hot bed temperature:  $\leq 100$  ° Filament diameter: 1.75mm Printing method: online or TF card offline printing Machine size: 47.5 \* 47.0 \* 62.0cm / 18.7 \* 18.5 \* 24.4in Item weight: 7.8kg / 17.2lb Package size: 57.0 \* 38.0 \* 20 .5cm / 22.4 \* 15.0 \* 8.1in Package weight: 9.6kg / 21.2lb Notes: 8GB TF card included. 20m white PLA filament included.

**CREALITY 3D Printer Ender-3/Ender 3 V2 FDM Printer Smart Filament Sensor Self-assemble Printer Kit**

Printer Details:

New upgrade of Ender-3

Ender-3 V2

# An upgraded version of a phenomenal 3D printer

Practical 3D printer

---



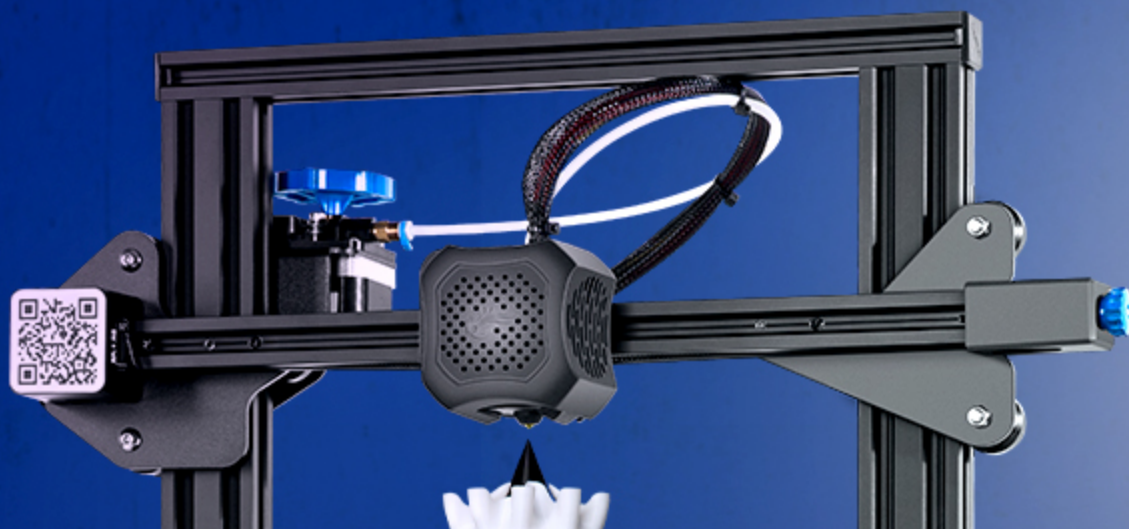
Integrated  
compact design



Multiple  
improved upgrades



Ultra  
silent printing





ENDER

# Integrated structure design

## Stable · fast · safe

A DIY 3D printer with practicability,  
fun and high performance



Exquisite  
appearance



Integrated  
structure design



High-precision  
printing



Craborundom  
glass platform



5 minutes to  
heat up



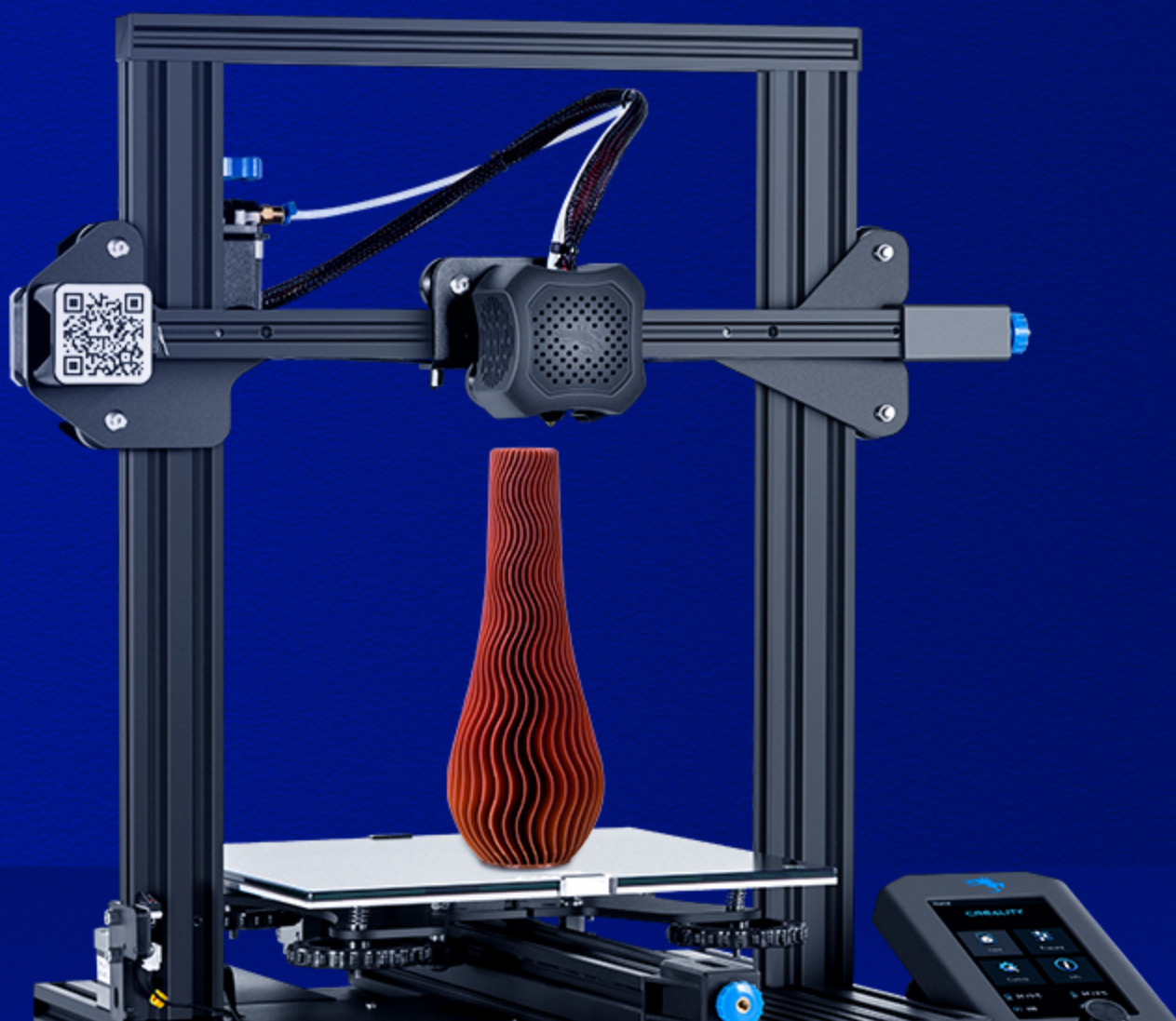
Easy to  
operate





# Classic appearance Integrated all-metal body

Classic appearance in integrated all-metal body  
inherited from its predecessor Ender-3, firm and stable

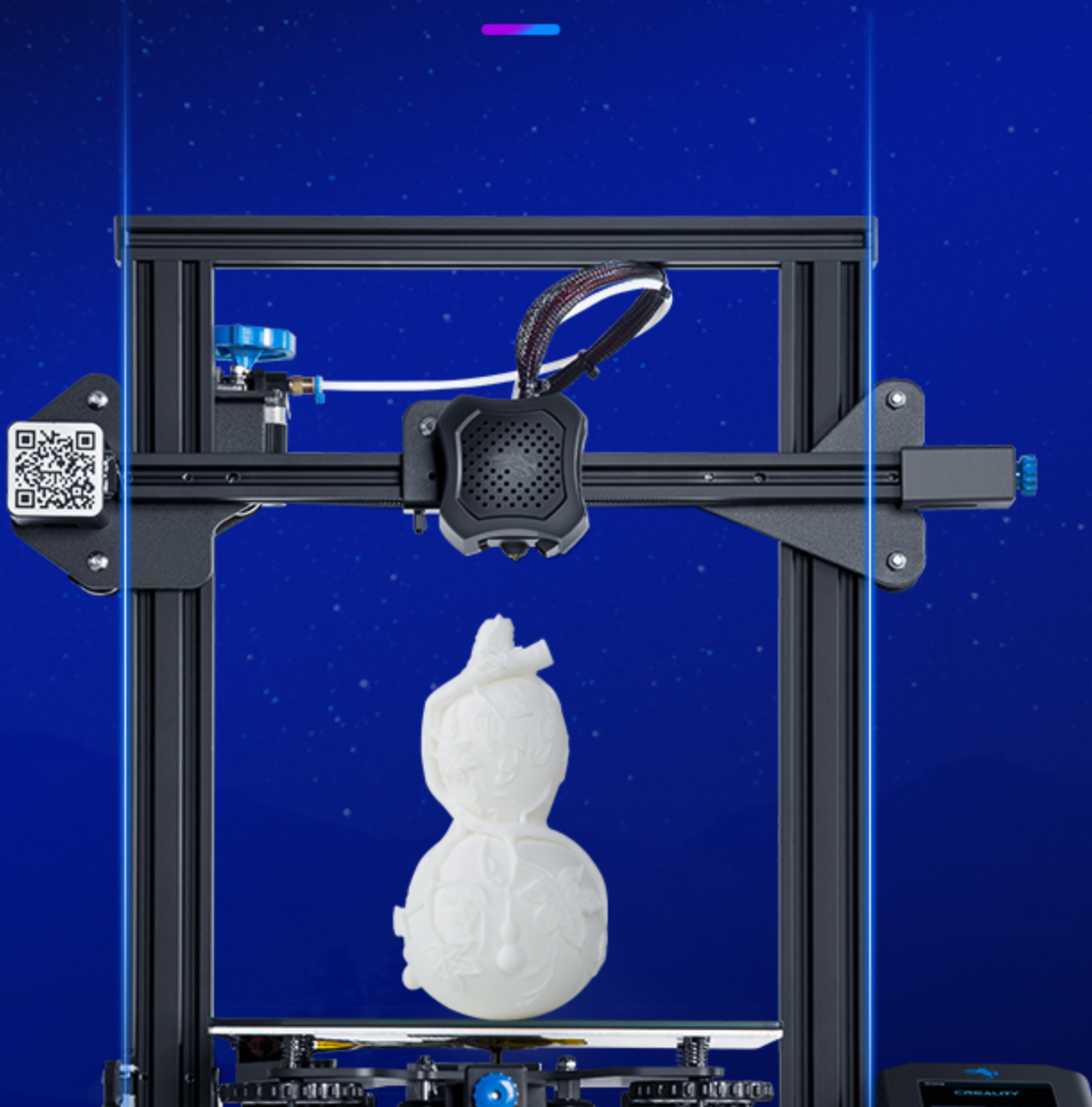




# Integrated structure design

## Easy to assembly

Easy to assembly and maintain with integrated structure and modular design  
the power supply is concealed in the machine making it much safer



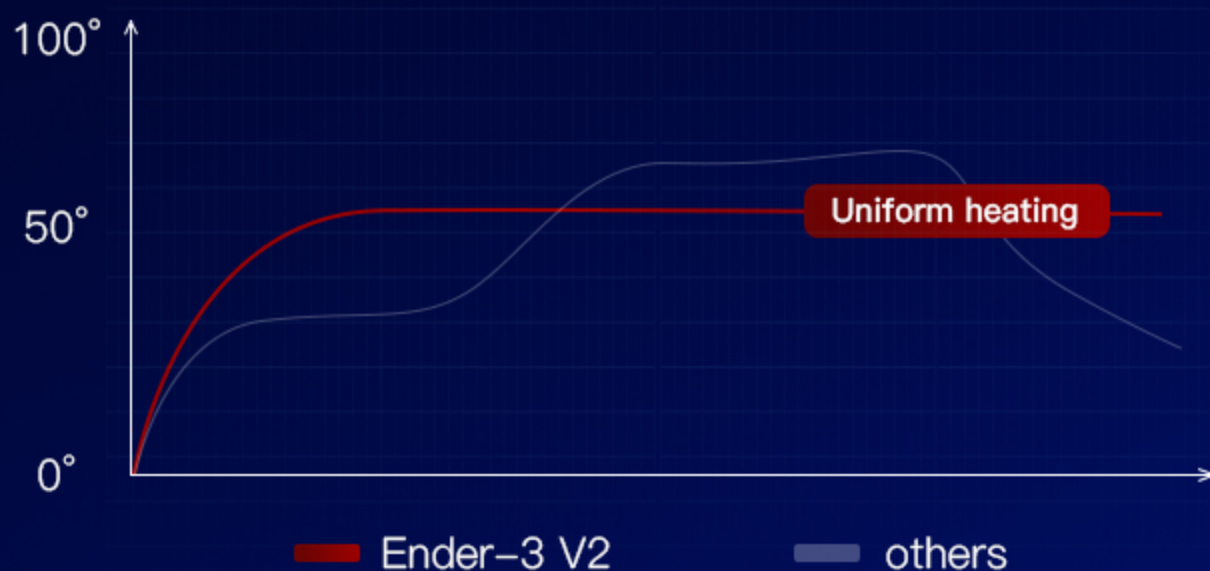
# V-guide rail with high standard Stable to print

Ender-3 V2 uses the V-guide rail pulley with stable movement, low noise, wear resistance and longer life



# Carborundum glass platform

The carborundum glass platform enables the hotbed heat up quicker and prints adhere better.  
Ultra smoothness even on the first layer





# Self-developed silent motherboard

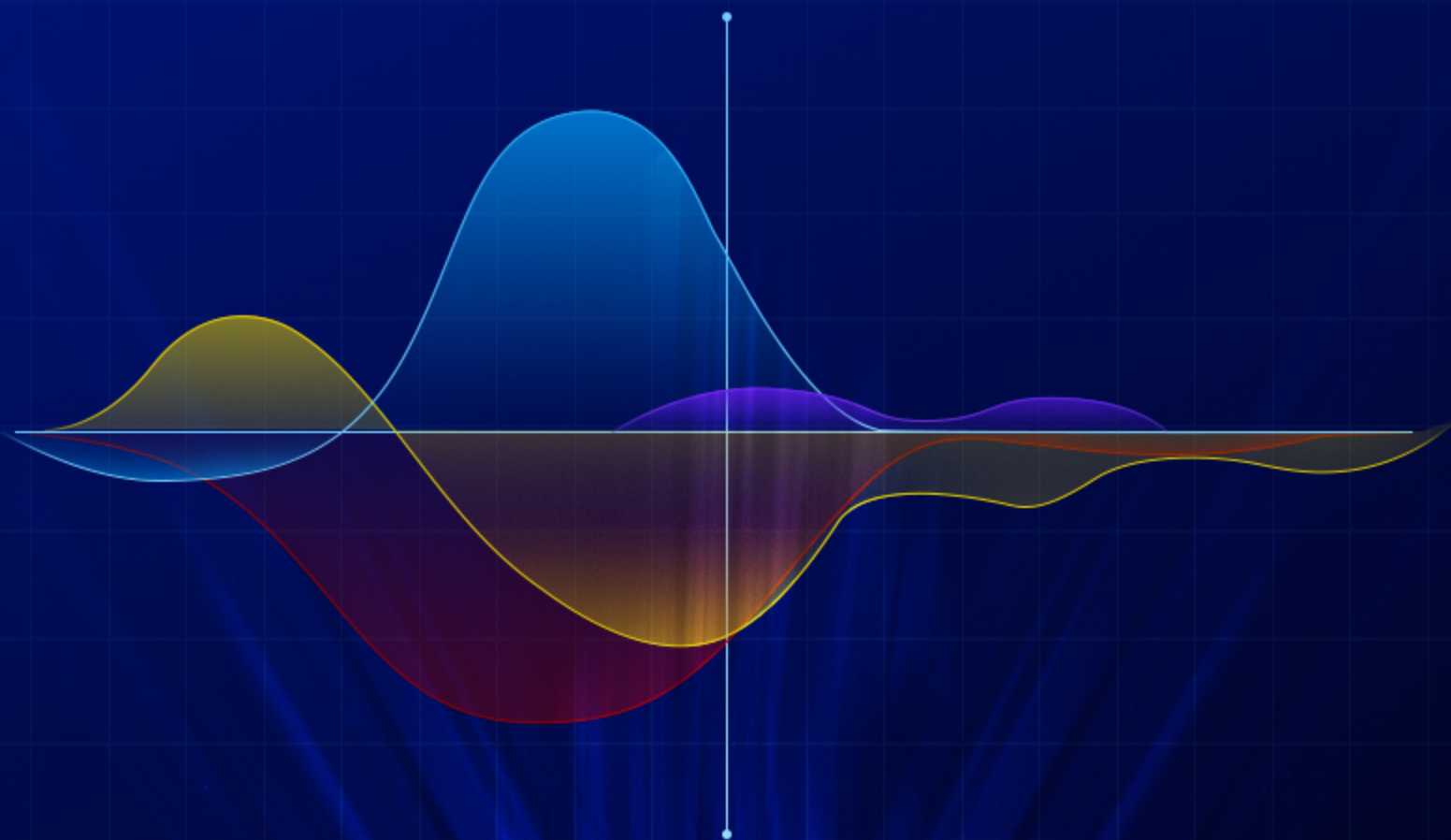
The self-developed silent motherboard always ensures smooth movement under 50dB, no noise during printing.

Famous brand Meanwell power is suitable for different voltages under 115V / 230V



- before de-noising

- After de-noising





# Smart sensor Resume printing function

The machine can automatically resume printing after power-off or filament breakage. Less worries on print failure

## TIPS

Detect the file unexpectedly  
stopped last time.

xx.gcode

Continue

Cancel

Resume  
printing

power  
failure

User friendly design for better  
3D printing experience



## New injection tensioner

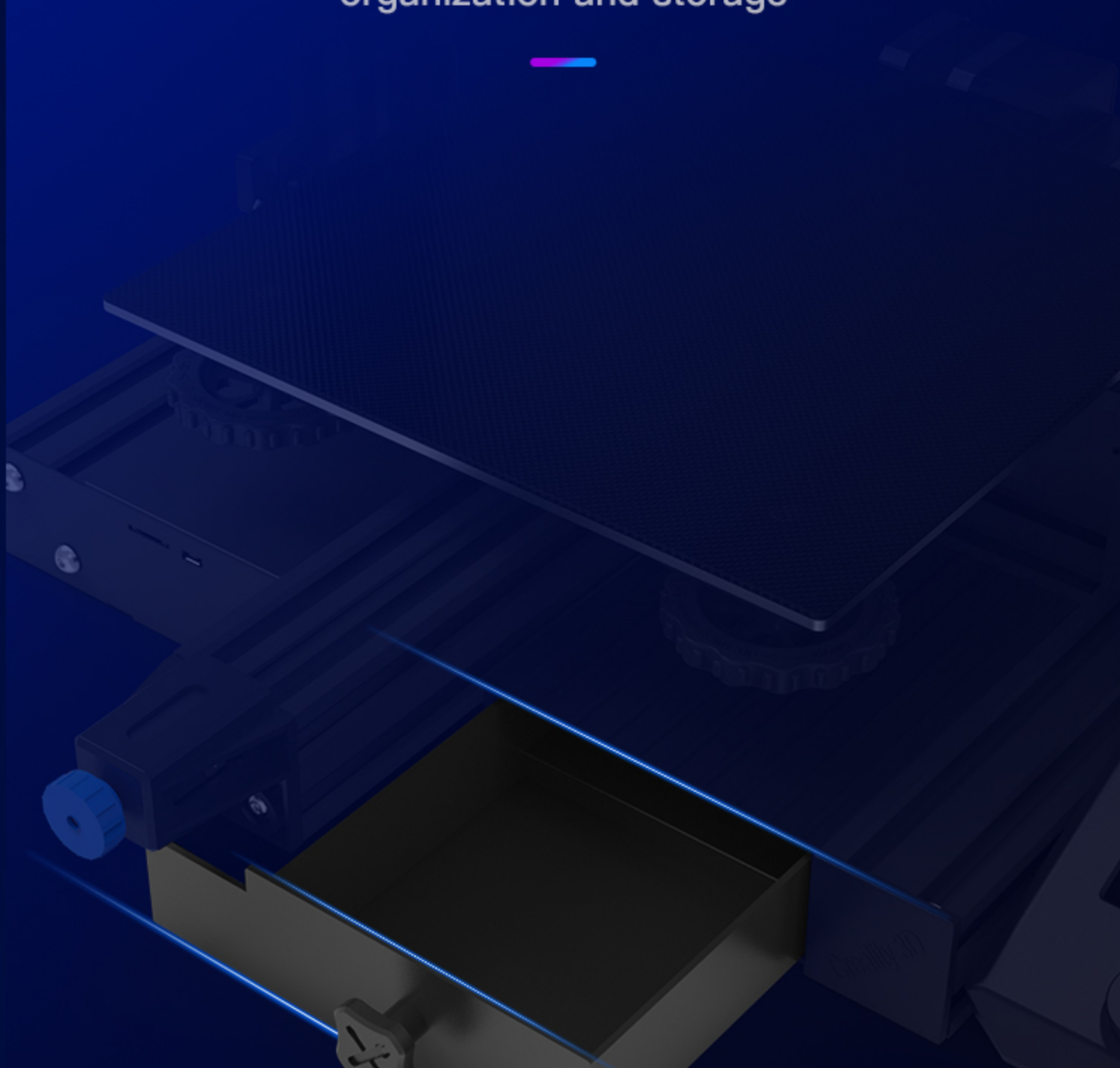
The XY-axis tensioner supports adjusting  
the belt tension in a quick and more  
convenient way





# Smart add-ons

With the tool box integrated to the machine body  
it is more convenient and quicker for tools  
organization and storage



# Product parameters



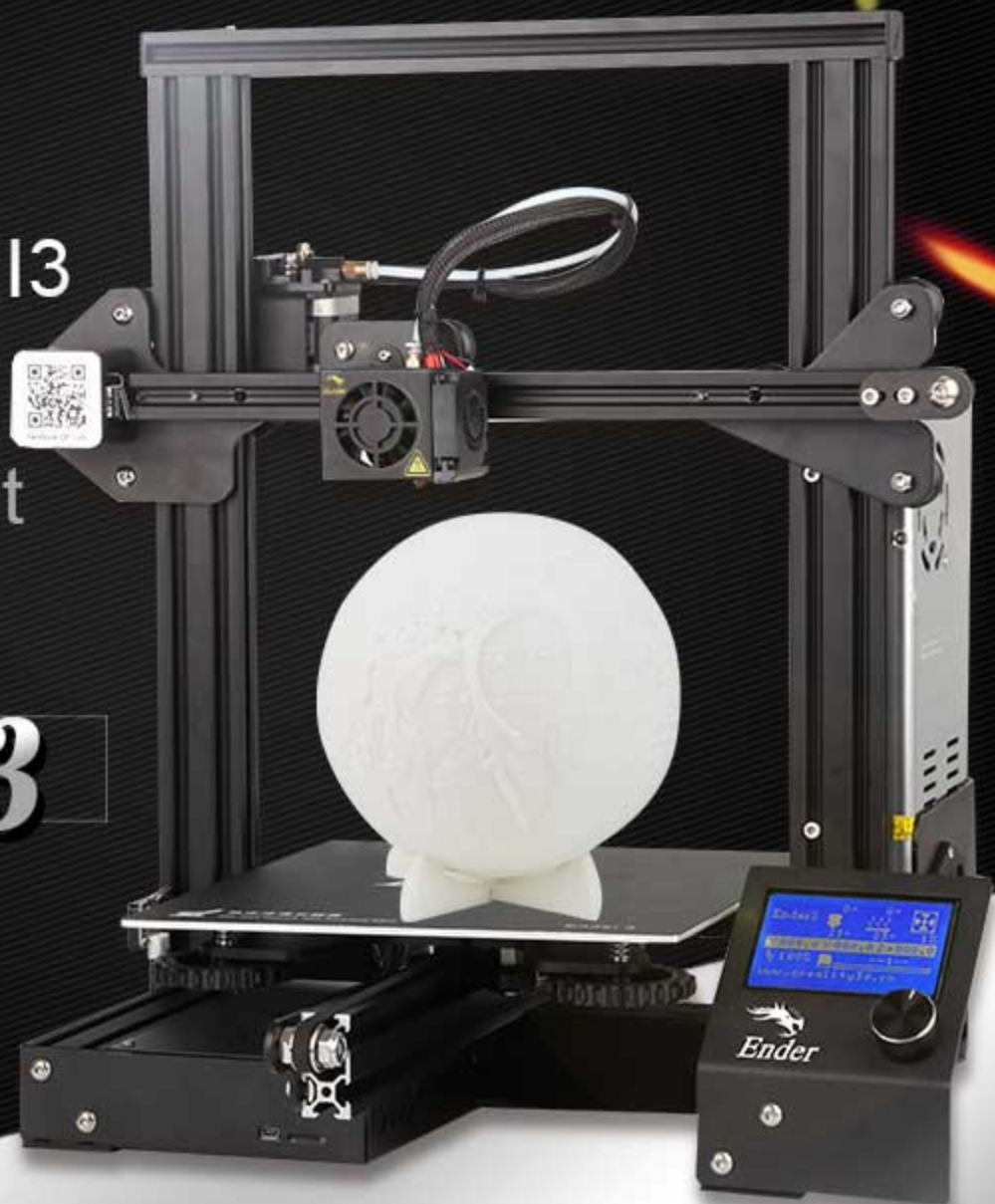
Machine size: 475*470*620mm	Layer thickness: 0.1-0.4mm
Print size: 220*220*250mm	Filament: PLA/TPU/PETG
Molding technology: FDM	Supported OS: MAC/WindowsXP/7/8/10
Product weight: 7.8kg	Slicer software: Simplify3d/Cura

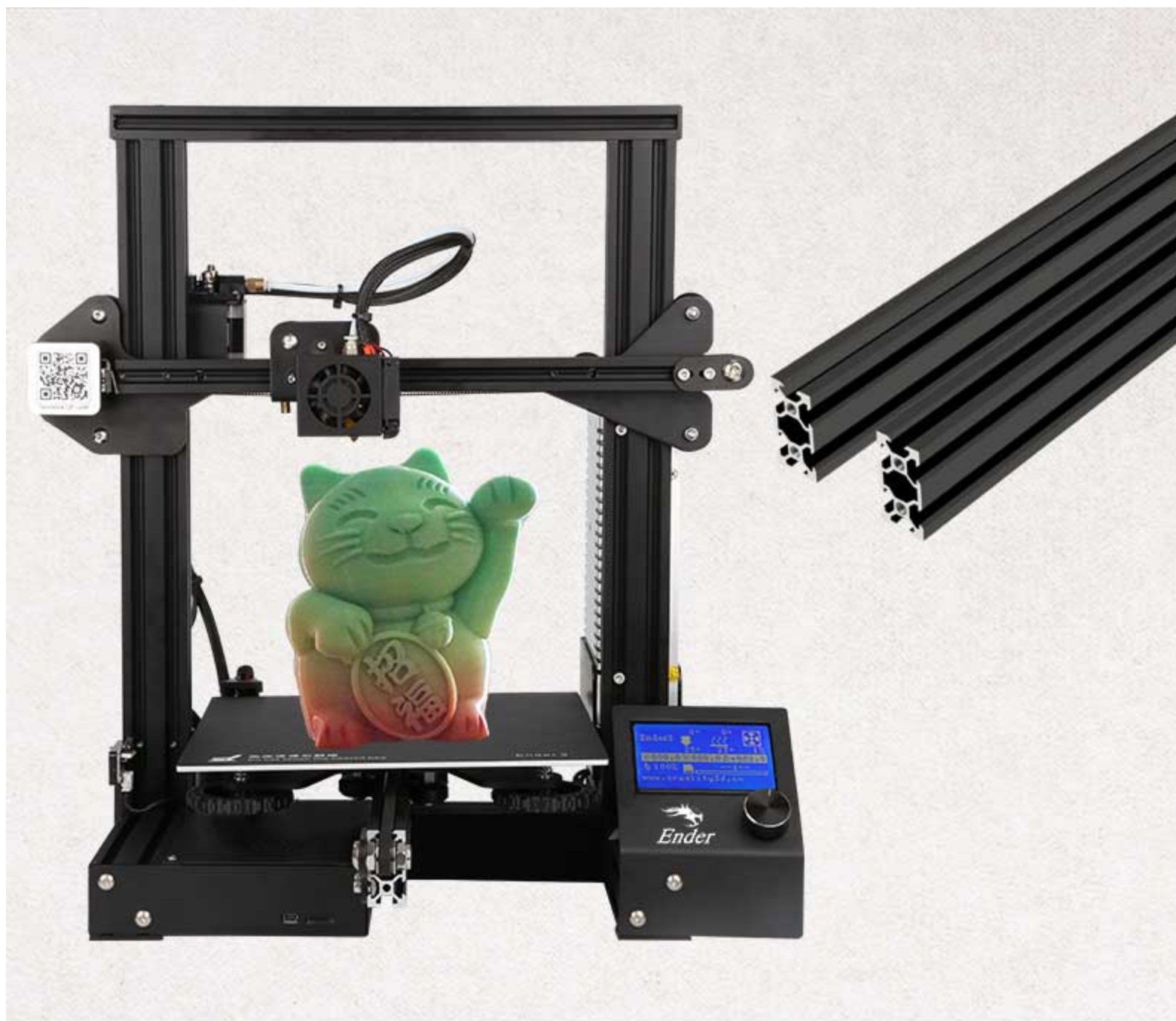


  
*Ender*

V-slot Prusa I3  
New fashion  
3D Printer Kit

***Ender-3***





V-Slot cooperate with Prusa I3 frame: extremely innovative design, following the step of the trend, integrating with classic elements, create a new generation economic DIY 3D printers.



# ***MACHINE PARAMETERS***

**Modeling Technology: FDM (Fused Deposition Modeling)**

**Printing Size: 220\*220\*250mm**

**Machine Size: 440\*410\*465mm**

**Package weight: 8kg**

**Max Traveling Speed: 180mm/s**

**Filament: 1.75mm PLA,TPU,ABS**

**Input: AC 100-265V 50-60Hz**

**Output: DC 24V 15A 360W**

**Layer Thickness: 0.1-0.4mm**

**Nozzle diameter: 0.4mm**

**Precision:  $\pm 0.1$ mm**

**File Format: STL,OBJ,G-Code**

**Working Mode: Online or SD offline**

**Max Nozzle Temperature: 255°C**

**Max Hot bed Temperature: 110°C**

