

Z-probe BL-Touch Auto Leveling Sensor

[Read More](#)

SKU: 3DW9KWR4G2U3V

Price: 200 DH 179 DH

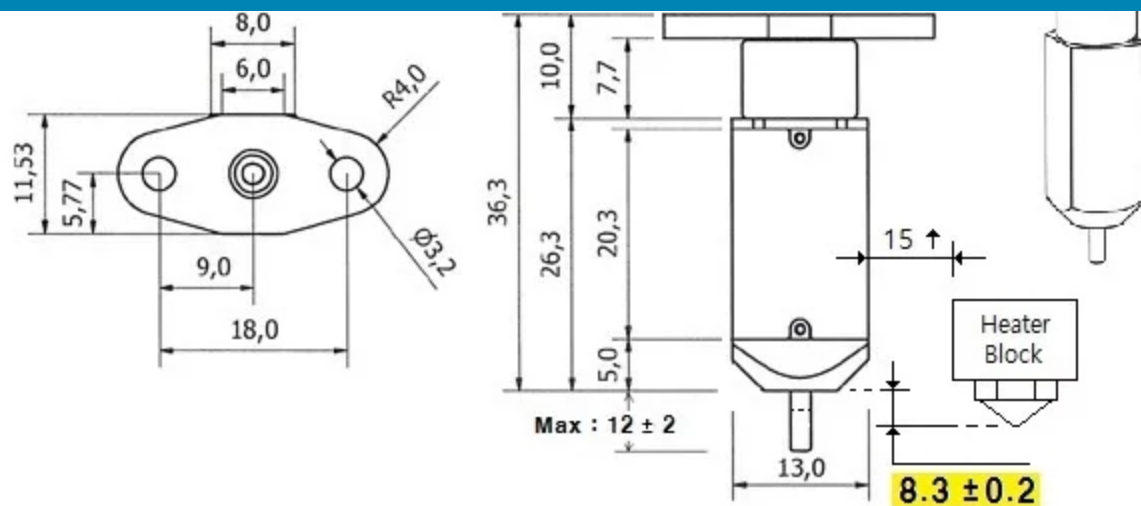
Stock: instock

Categories: [Spare Parts](#)

Product Description

3D Printer Z-probeTouch Auto Leveling Sensor Auto Bed Leveling Sensor Touch For Anet A8 mk8 i3 Improve Printing Precision

Voltage	5V
Current	15mA
Maximum(Peak)Current	300mA
Color	Semitransparent Black
Cable Length	150mm
Weight	0.35 oz(10g)
Wiring	3Pin:Black(-,GND)
	Red(+5V)
	Blue(control Signal)
	2Pin:Black(-,GND)
	Yellow(Zmin)



3D Printer Z-probe

Touch uses the same servo signal which used in previous servo line.

- Solenoid Push-pin Up → servo signal 90Degree(ex : M280 P0 S90)
- Solenoid Push-pin Down → servo signal 10Degree(ex : M280 P0 S10)
- Manual Self-test → servo signal 120Degree(ex : M280 P0 S120)
- Alarm Release → servo signal 160Degree(ex : M280 P0 S160)

※ 3D Printer Z-probe Touch can be operated in the following condition.

- One I/O (PWM or Software PWM) for control
- One I/O for Zmin
- GND and +5V power

However, Firmware updating might be needed on a case.

If you use this on an Anet A8 then you need to cross over the YELLOW & BLUE wires. Couldn't figure out why it wouldn't work until I read the head unit. The Yellow is the endstop and the Blue is the pwm input, I just cut them and reversed them.